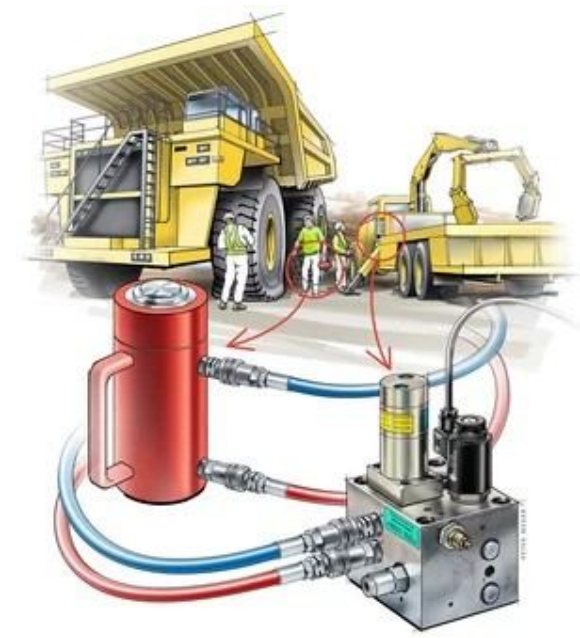


Product range from miniBOOSTER Hydraulics A/S

We have a comprehensive range of hydraulic pressure intensifiers that cover 15 intensification factors up to 5,000 bar and flows up to 400 l/min, using almost any media including tap water. The range covers flanged versions, tube versions and cartridge versions and includes standard blocks with built-in valves option that dramatically reduces the need for space and piping.

The miniBOOSTER product range covers your needs. View the entire miniBOOSTER product range in table format, containing data such as flow, pressure, weight and material.



BOOSTERS

P-outlet bar	Intensified outlet Q l/min	P-inlet bar	Inlet Q l/min	Connection	Weight, kg	Factor, i	Steel	Stainless steel
24 - 800	0.3 - 0.5	20 - 207	2.0 - 8.0	· Tube · Flange	0.7	1.2 - 7.5	· HC1	· HC1W
24 - 800	0.3 - 2.5	20 - 207	2.0 - 15.0	· Tube · Flange	1.0	1.2 - 20.0	· HC2	· HC2W
24 - 800	0.7 - 11.0	20 - 207	2.0 - 15.0	· Tube · Flange	3.8	1.2 - 20.0	· HC2D · HC2D-D	· HC2DW
80 - 1,380	1.5 - 5.0	20 - 207	2.0 - 14.0	· Tube · Flange	8.0	4.0 - 13.0		· HC2DHW
24 - 500	0.3 - 2.5	20 - 207	2.0 - 15.0	· Flange	2.5	1.2 - 20.0	· HC3	
26 - 800	1.5 - 7.0	20 - 207	2.0 - 40.0	· Tube · Flange	3.7	1.3 - 9.8	· HC4	· HC4W
100 - 3,000	1.2 - 3.5	20 - 207	2.0 - 40.0	· Tube · Flange	4.0	5.1 - 17.3	· HC4H	
26 - 800	2.5 - 15.0	20 - 207	5.0 - 80.0	· Tube · Flange	9.5	1.3 - 8.2	· HC6	
124 - 5,000	1.0 - 7.0	20 - 207	5.0 - 50.0	· Tube · Flange	11.0	6.2 - 25.0	· HC6H	
24 - 800	11.2 - 56.0	20 - 207	5.0 - 80.0	· Tube · Flange	20.0	1.2 - 8.2	· HC6D · HC6D-D	· HC6DW
80 - 1,380	3.0 - 12.5	20 - 207	5.0 - 50.0	· Tube · Flange	35.0	4.0 - 16.0		· HC6DHW
100 - 2,000	0.3 - 1.6	20 - 207	2.0 - 14.0	· Tube · Flange	1.5	5.0 - 20.0	· HC7	· HC7W
100 - 2,600	0.2 - 0.8	20 - 207	2.0 - 12.0	· Tube · Flange	1.5	10.3 - 25.0	· HC7H	
100 - 2,000	0.3 - 1.6	20 - 207	2.0 - 14.0	· Tube · Flange	4.5	5.0 - 20.0	· HC8	
100 - 3,000	0.2 - 0.8	20 - 207	2.0 - 12.0	· Tube · Flange	4.5	10.3 - 25.0	· HC8H	
220 - 5,000	0.3 - 1.8	20 - 207	5.0 - 20.0	· Tube · Flange	9.9	8.2 - 25.0	· HC9	

BOOSTERS, DOUBLE ACTING

P-outlet bar	Intensified outlet Q l/min	P-inlet bar	Inlet Q l/min	Connection	Weight, kg	Factor, i	Steel	Stainless steel
24 - 800	0.3 - 2.5	20 - 207	2.0 - 15.0	· Tube	3.0	1.2 - 20.0	· HC5	

BOOSTERS, 2-MEDIA

P-outlet bar	Intensified outlet Q l/min	P-inlet bar	Inlet Q l/min	Connection	Weight, kg	Factor, i	Steel	Stainless steel
20 - 800	2.0 - 3.0	20 - 207	2.0 - 15.0	· Tube · Flange	4.2	1.2 - 12.0	· HC2D2	· HC2D2W
80 - 1,380	0.6 - 1.6	20 - 207	2.0 - 8.0	· Tube · Flange	8.0	4.0 - 12.0		· HC2D2HW
20 - 800	6.0 - 41.0	20 - 207	5.0 - 55.0	· Tube · Flange	24.0	1.0 - 10.1	· HC6D2	· HC6D2W
20 - 1,380	2.0 - 5.6	20 - 207	5.0 - 45.0	· Tube · Flange	25.0	5.2 - 15.0	· HC9D2	· HC9D2W